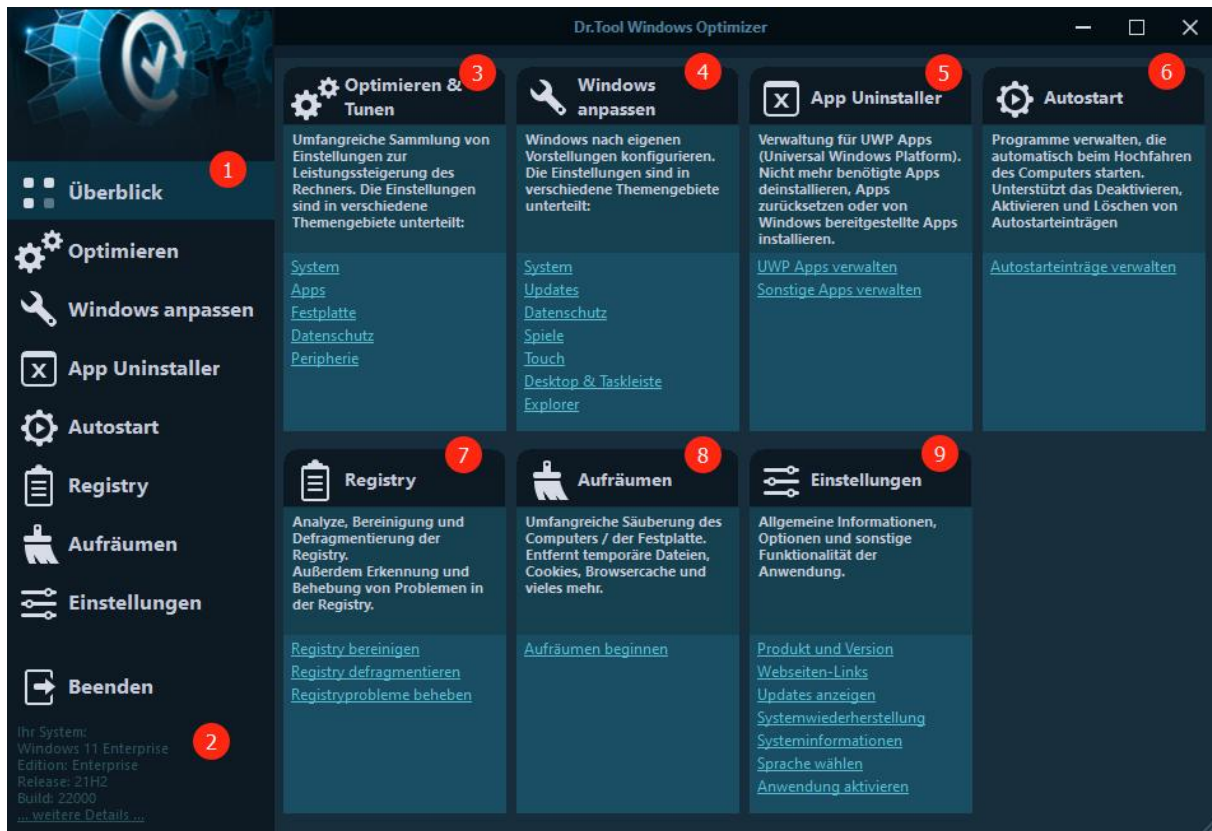


Windows Optimizer

Overview of the User Interface



1. All Optimizer Functions at a Glance
2. Current information about your system and its performance
3. In this section you will find ways to improve your system's performance.
4. Here you will find modules to customize your system to your personal wishes and preferences.
5. These modules help you manage apps and programs on your PC.
6. With this module you can adjust the programs that start when the system boots.
7. Here you will find tools to clean the registry, find orphaned entries, and fix errors.
8. This module helps you find and remove data traces, unnecessary files, and more.
9. With these modules you can make individual settings for the program.

The Modules

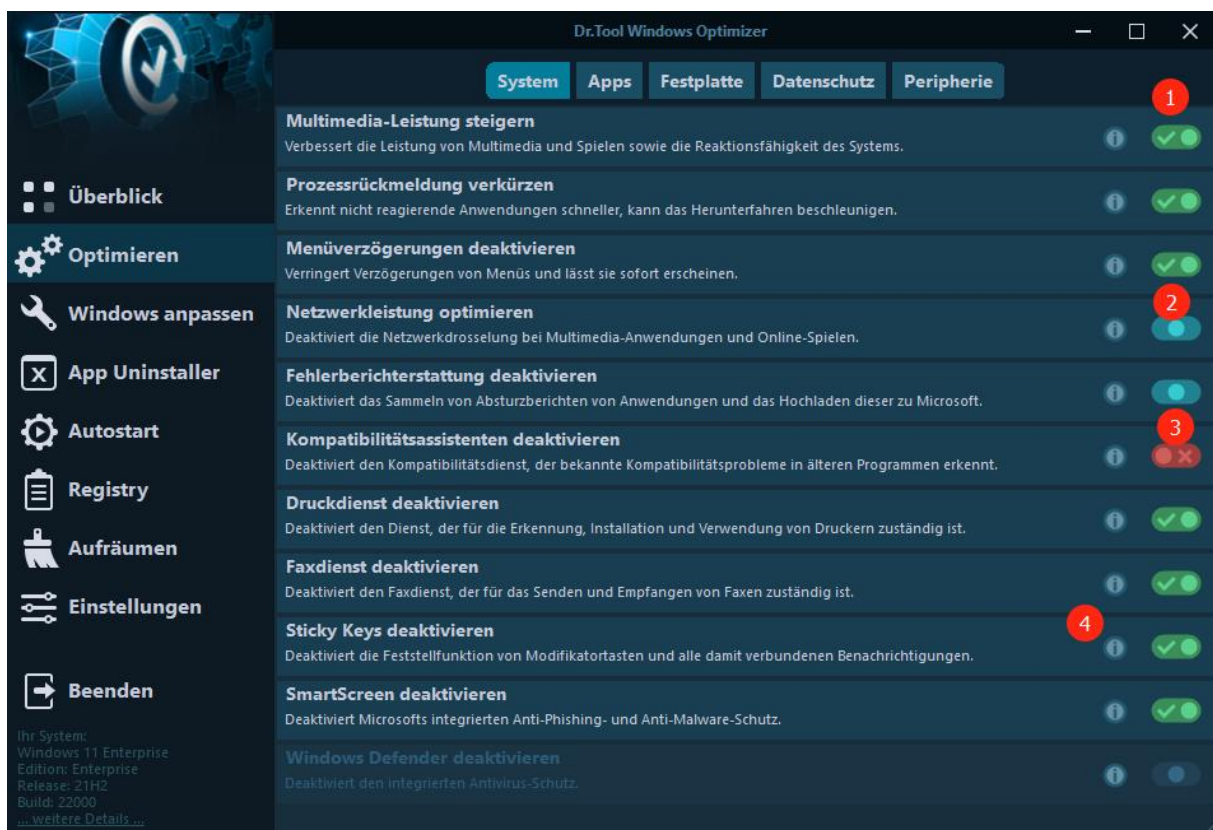
The modules All settings in the respective areas that are controlled by a toggle have a short info (4). You can view these by clicking the “i” icon. Here you can also check whether the corresponding menu item is supported by your operating system.

Typically, a greyed-out line indicates that your OS does not support the setting or the program was not started with administrator rights..

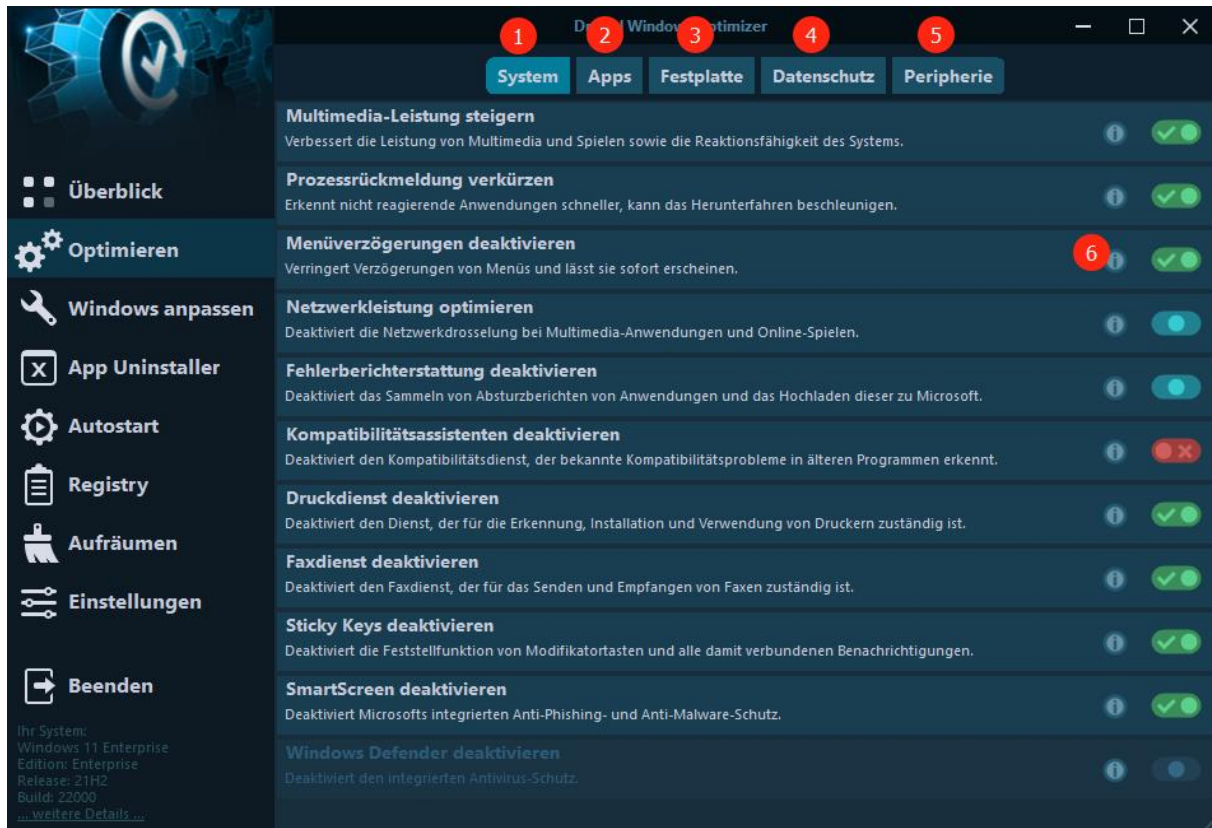
Additionally you receive further information on how to use the function.

The toggles themselves have three states, shown as “On” (1), “Off” (3), and “Unknown / Ambiguous” (2).

“On” or “Off” indicate whether the switch is enabled or disabled. “Unknown / Ambiguous” when the toggle state could not be determined unambiguously. This can happen, for example, if the setting was changed by another program or by Windows. The Optimizer can then be used again to obtain a clear setting.



"Optimize" Module



The optimization settings are divided into the areas:

System (1)

Adjustments of system settings and services

Apps (2)

Adjust telemetry settings of installed applications

Disk (3)

Adjust messages and settings related to the file system

Privacy (4)

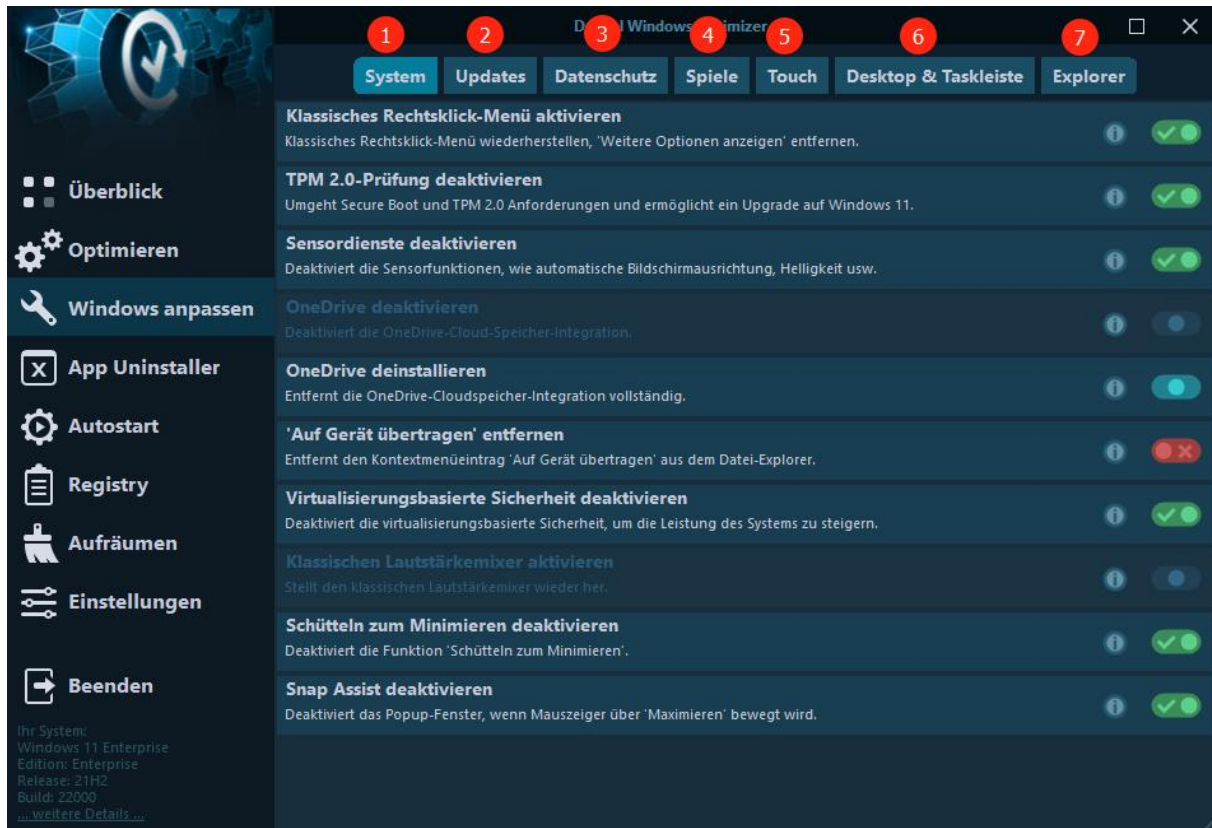
Make privacy-related settings

Peripherals (5)

Resolve any existing issues with connected devices

Details of each setting and its function can be obtained by clicking the "i" (6)

"Customize Windows" Module



The "Customize Windows" module is divided into the areas:

System (1)

Adjust general settings for Windows components

Updates (2)

Restrict or allow Windows updates, software, drivers, etc.

Privacy (3)

Settings that increase privacy by limited data collection/transfer

Games (4)

Special settings for games and Xbox

Touch (5)

Make adjustments for touch-based input devices (stylus input, touch keyboard, etc.)

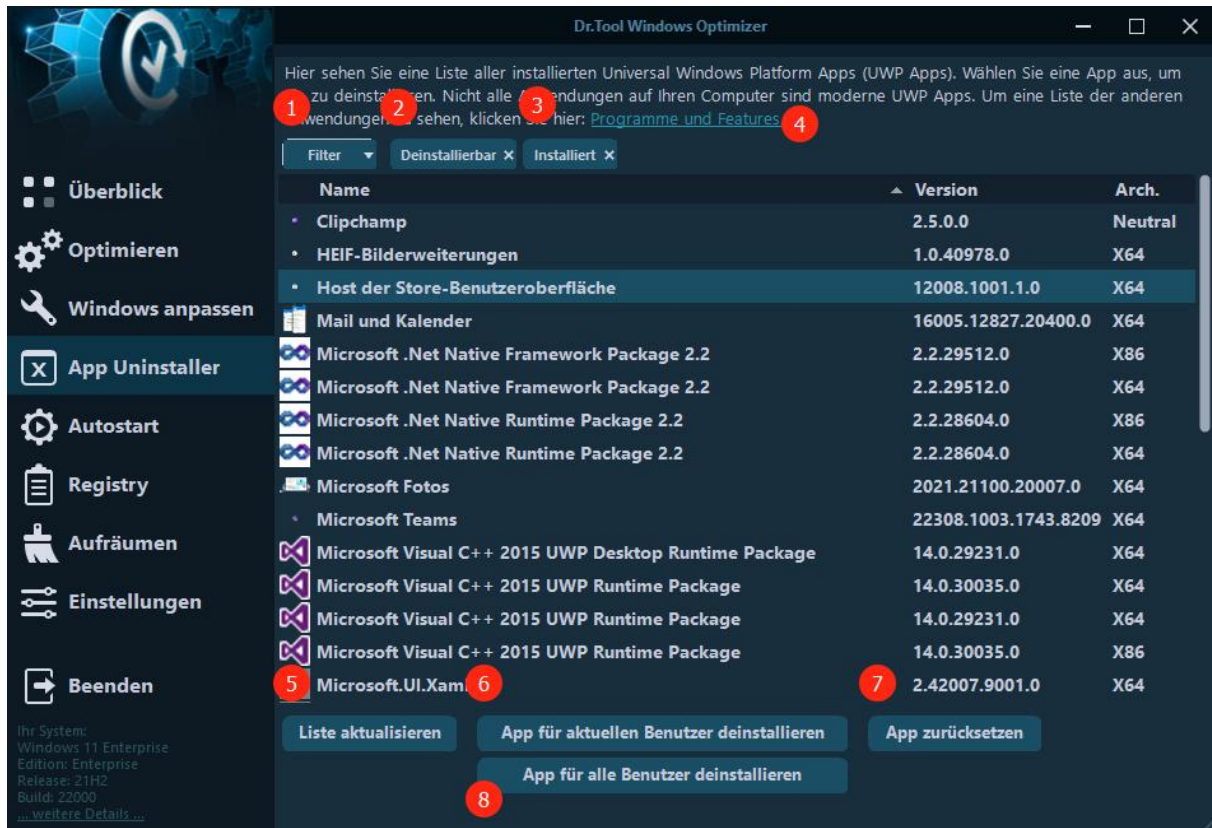
Desktop & Taskbar (6)

Customize special functions of the taskbar and desktop

Explorer (7)

Adjust advanced settings for File Explorer

“App Uninstaller” Module



In the “App Uninstaller” module you will see a list of all installed Universal Windows Platform (UWP) apps.

With one click on Filter (1) you can assemble a selection of apps to display. By default, this includes all uninstalleable apps (2) and all apps that are currently installed (3). A click on the cross in the respective selection removes this filter criterion.

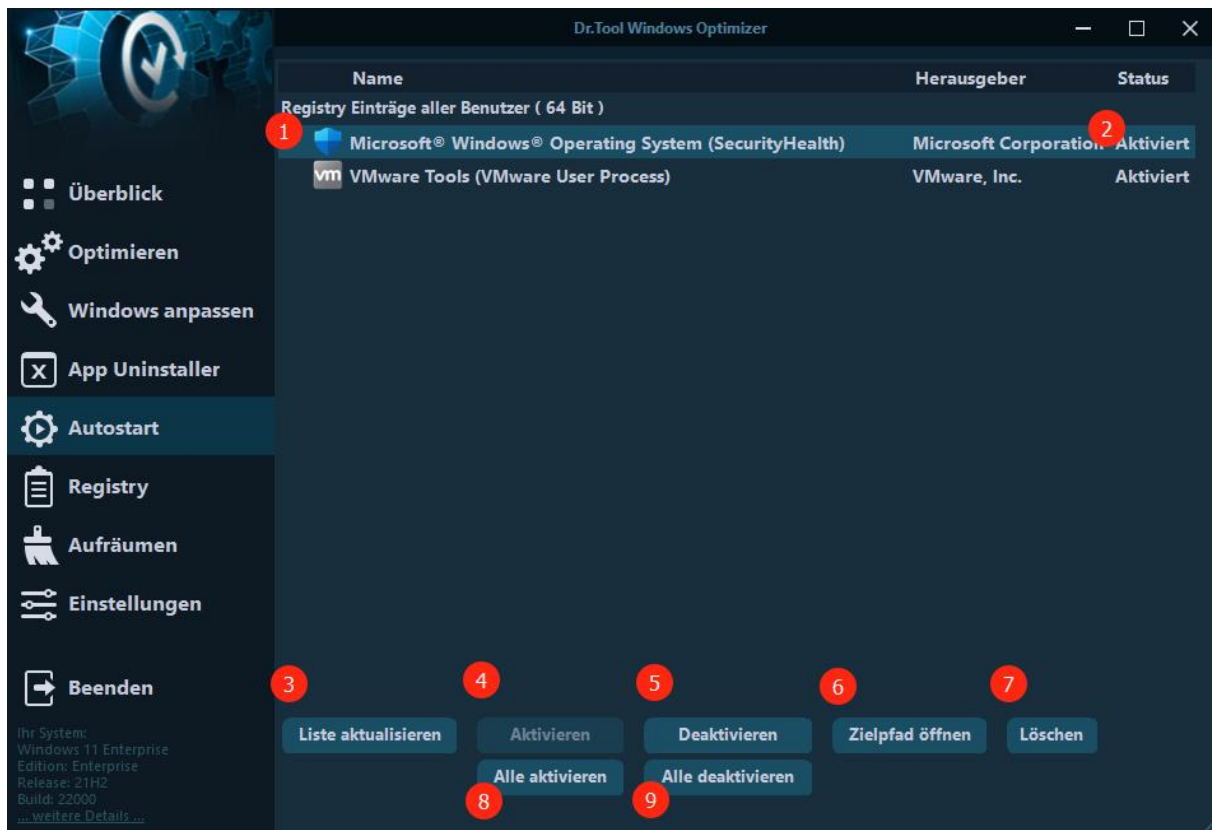
Other programs and functions (non-UWP apps) can be adjusted by clicking on “Programs and Features” (4).

After any changes, the UWP list can be reloaded by clicking on “Refresh list” (5).

To uninstall an app for the currently logged-in user, choose “Uninstall app for current user” (6). If the app should be removed for all users on the system, use “Uninstall app for all users” (8).

If an app was deleted by mistake, you can redeploy it using the option “Restore app” (7).

„Autostart“ Module



The “Autostart” module allows settings for programs that are activated immediately after system startup.

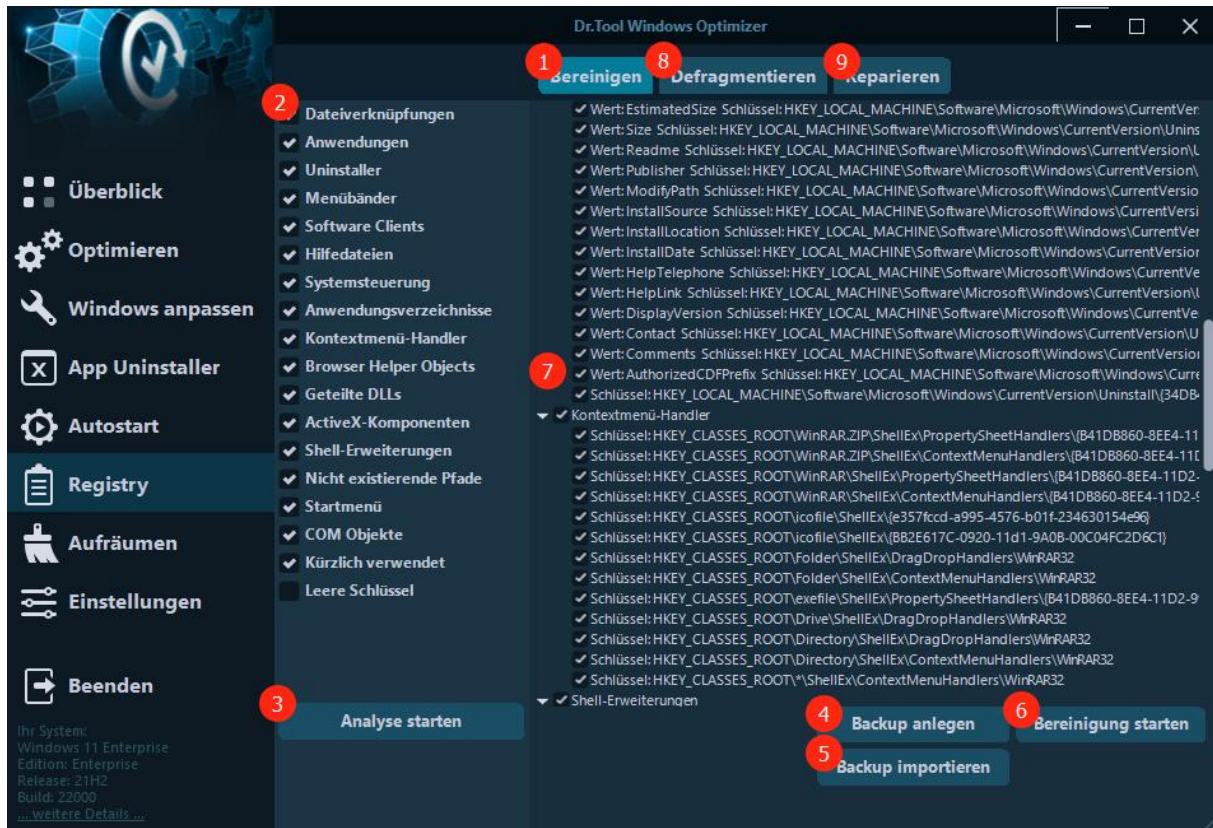
The individual programs are shown in a list (1). Here you will see the program name and, if available, the publisher. Whether the program is currently running after a system startup is indicated under Status (2).

After selecting a program, the status can be adjusted by clicking on “Disable” (5) or “Enable” (4). If the program should be removed entirely from Autostart, this can be done by clicking on “Delete” (7).

To obtain more information about the program or its origin, you can determine the program’s origin by clicking “Open path” (6). After changes, the list of programs can be reloaded at any time by clicking on “Refresh list” (3).

If you want to edit all programs at once, this is possible with “Enable all” (8) or “Disable all” (9).

„Registry“ Module



The “Registry” module can find and remove orphaned, damaged, or faulty entries in the registry or defragment its structure.

The Cleaning (1)

Select the sub-sections of the registry to inspect (2). Avoid choosing options you do not know or know only inadequately! For example, removing empty keys is not always advisable.

Start an analysis (3) to learn about problems. From the found issues, choose the ones you want to clean (7). When you have made your choice, start the cleaning (6).

It is advisable to create a backup of the registry before making changes (4). If errors occur after cleaning, this backup can restore the state before cleaning. Use the “Import Backup” button (5).

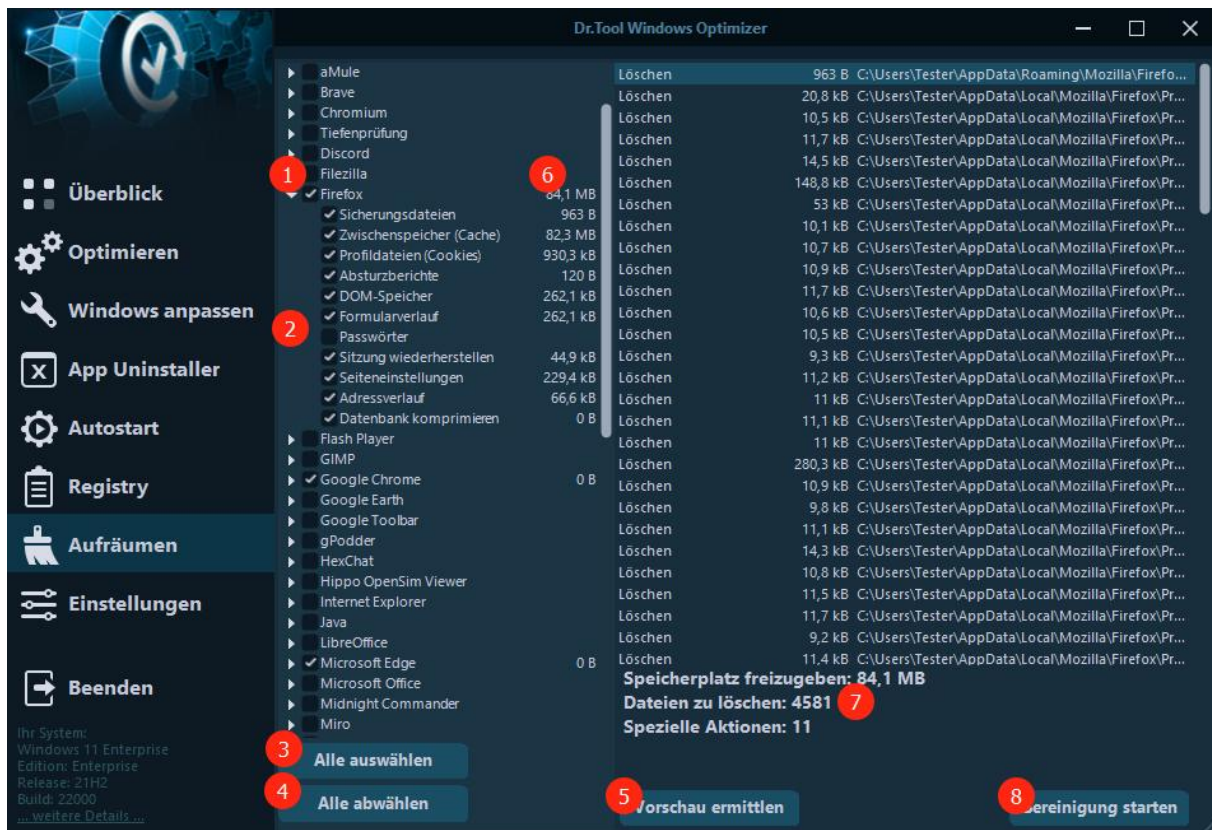
The Defragmentation (8)

Defragmentation is performed in two steps: first, all data is collected, and in the second step the registry structure with all data is rewritten. This defragmentation process occurs after a restart, upon booting the computer.

The Repairing (9)

This function is available only when a damage to the registry has been found.

The “Cleanup” Module



The “Cleanup” module can find and remove unnecessary data, temporary files, or data fragments in selected programs and directories.

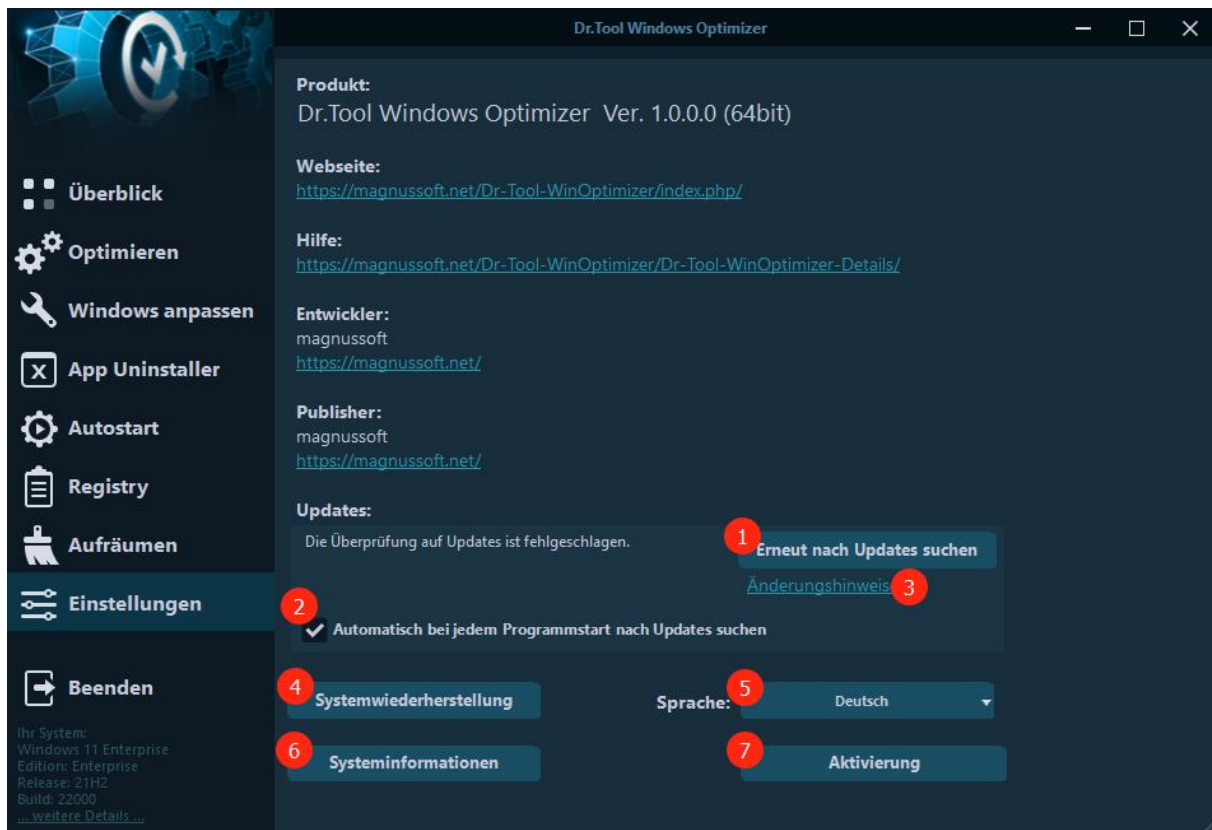
Select the program to inspect (1). By clicking the triangle, you access the respective submenu with further options. Choose data here that you may want to handle individually (2). For example, browser passwords should not be deleted if they are still in use!

If you want a complete cleanup/deletion across all programs or their temporary data, press the “Select All” button (3) or, if not: “Deselect All” (4).

Once you have finished setting the programs to inspect, you can use “Determine Preview” (5) to display what the result (6) and (7) would look like after a cleanup.

With one click on “Start Cleaning” (8), the cleanup will be performed.

Settings Area



In the Settings area, basic settings and information are provided.

System Restore

Before making changes to your system, you should create a system restore point! This can be done here, at (4).

Language

At (5) you can choose the program language.

System Information

All information about your system (hardware and software) can be found at (6).

Activation

You can activate the program at (7).

Updates

You can have the program automatically check for a new version at every start by enabling the checkbox at (2). To manually check for a new version, press the button at (1). After an update, information about all changes can be found at (3).