

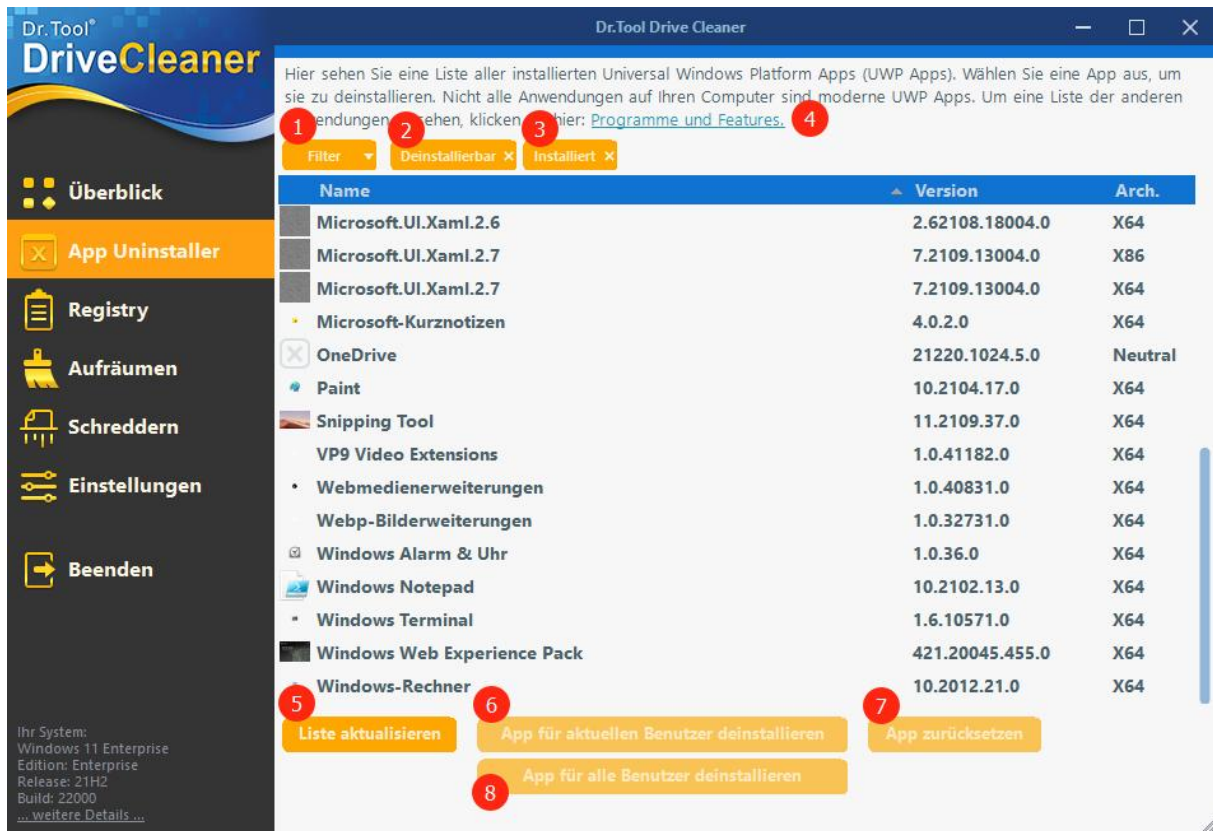
Drive Cleaner

Overview of the user interface



1. All cleaner functions at a glance.
2. Current information about your system and its performance.
3. The “App Installer” module helps you manage apps and programs on your PC.
4. The “Registry” module: here you’ll find tools to clean the registry, locate orphaned entries, and fix errors.
5. The “Cleanup” module helps you find and remove data remnants, unnecessary files, and more.
6. The “Shredder” module can target and shred data/folders. It is also possible to shred free space.
7. “Settings”: you can make individual program settings.

„App Uninstaller“ Modul



In the "Uninstaller" module you see a list of all installed Universal Windows Platform (UWP) apps.

By clicking Filter (1) you can assemble a selection of apps to display. By default this includes all uninstalleable apps (2) and all apps that are currently installed (3). Clicking the cross in the respective filter removes that filter criterion.

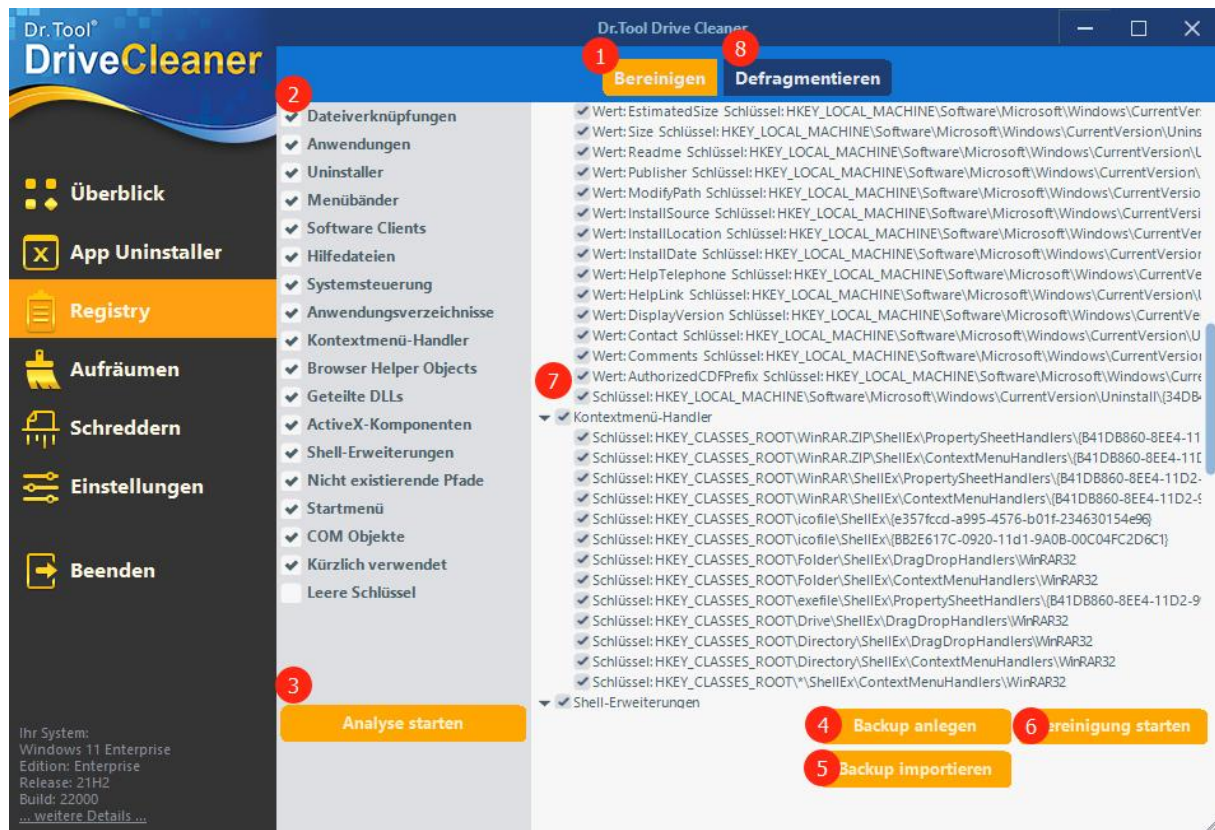
Other programs and features (non-UWP apps) can be adjusted by clicking Programs and Features (4).

After any changes, the UWP list can be re-read by clicking "Refresh list" (5).

To remove an app for the currently logged-in user, choose (6). If the app should be removed for all users of the system, use "Uninstall app for all users" (8).

If an app was deleted by mistake, it can be re-provisioned via "Reset app" (7).

Registry Modul



The registry module can locate and remove orphaned, corrupted, or faulty entries in the registry or defragment the structure.

Cleaning (1)

Select the sub-sections of the registry to examine (2). Avoid selecting options that you do not know well enough, or at least not sufficiently. For example, removing empty keys is not advisable in every case.

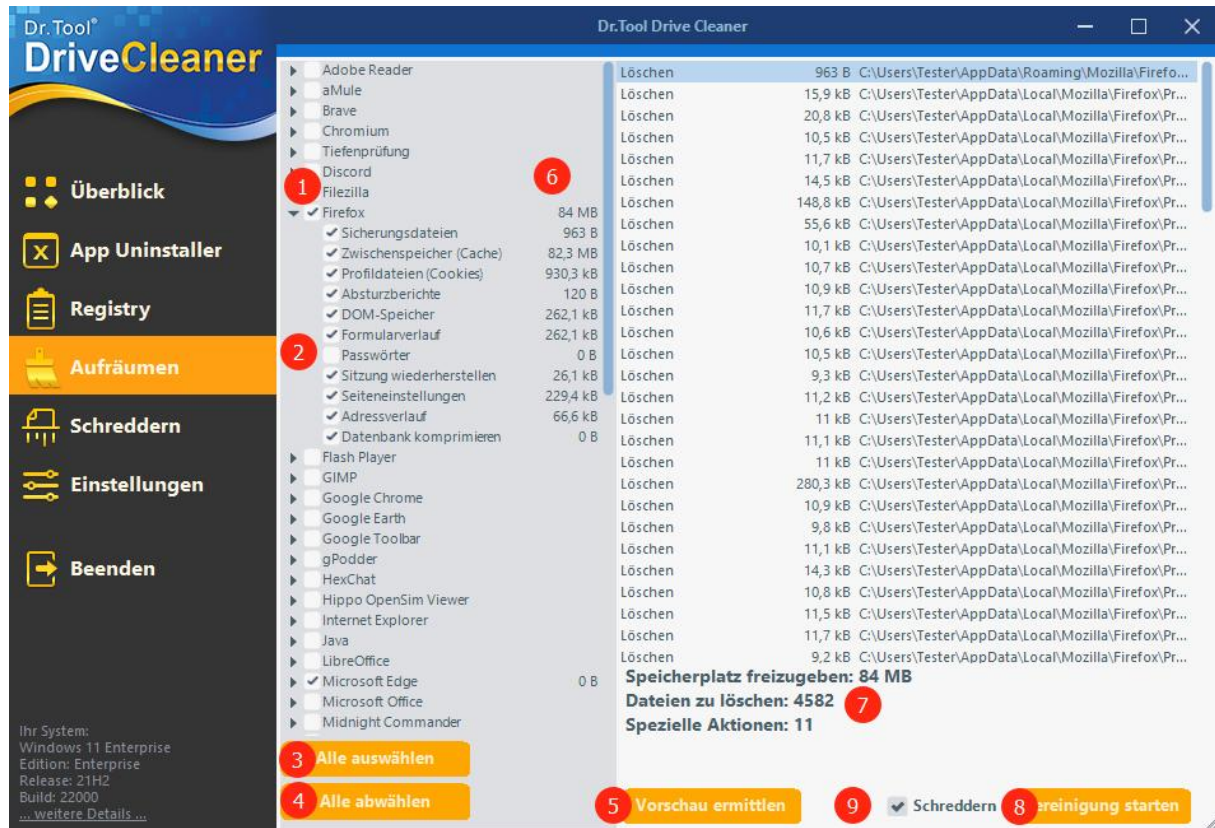
Start an analysis (3) to learn about issues. Among the found problems, choose which ones you want to clean (7). Once you have made your choice, start the cleaning (6).

It is advisable to back up the registry before making changes (4). If errors occur after cleaning, this backup can restore the state prior to cleaning. Use the Backup import button (5) for this.

Defragmentation (8)

Defragmentation is performed in two steps: first, all data is gathered, and in the second step the registry structure is rewritten with all data. This defragmentation process takes place after a system restart, when the computer starts up.

Cleanup Module



The Cleanup Module cannot find and remove unnecessary data, temporary files, or data fragments in selected programs and directories.

Select the program to be examined (1). By clicking the triangle, you will enter the corresponding submenu for further options. Here, choose data that you may want to handle individually (2). For example, passwords from browsers should not be deleted if they are still in use!

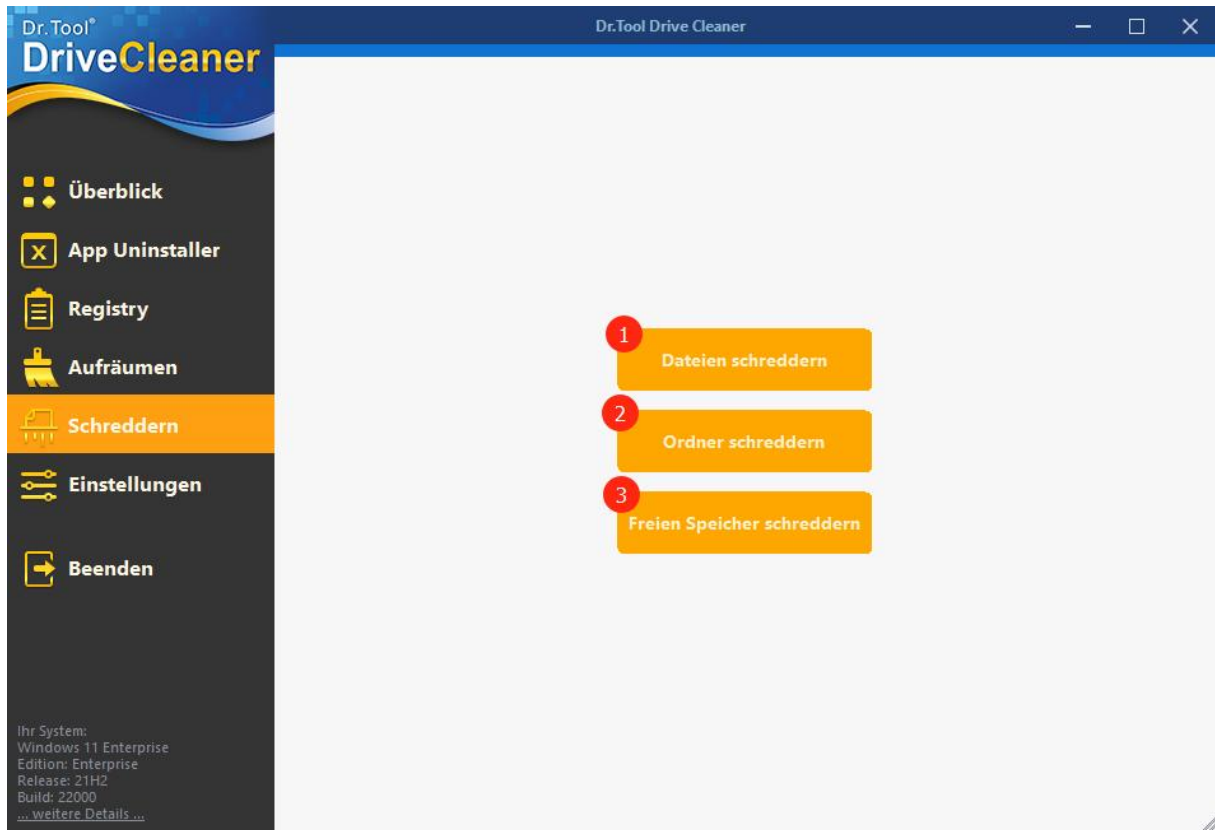
If you want a complete cleanup/deletion for all programs or their temporary data, press the “Select all” button (3); or, if not: “Clear all” (4).

Once you have finished configuring the programs to be examined, you can preview what the result (6) and (7) would look like after cleaning by using “Preview results” (5).

Click “Start cleanup” (8) to perform the cleanup.

If you want to delete the data more securely, you can check the “Shred” option (9).

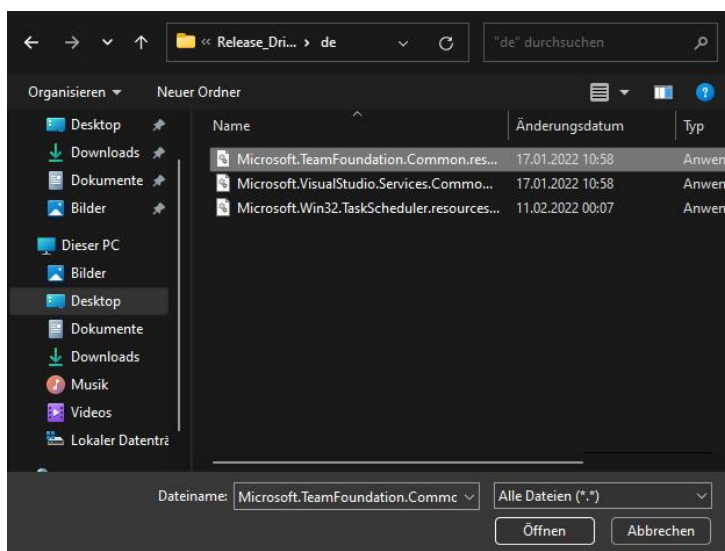
Shredder module



With this module, it is possible to delete data more securely by “shredding” it. This process is SECUREer the more it is not performed only once.

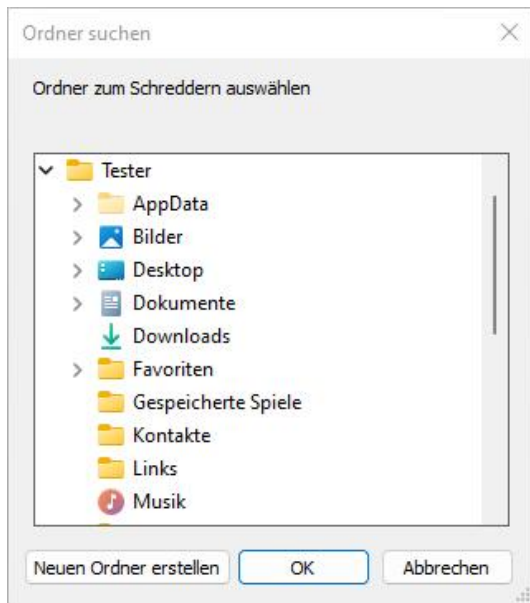
Individual files

For shredding individual files, select “Shred files” (1). In the following dialog you can now choose the file to be shredded.



Shred entire folders

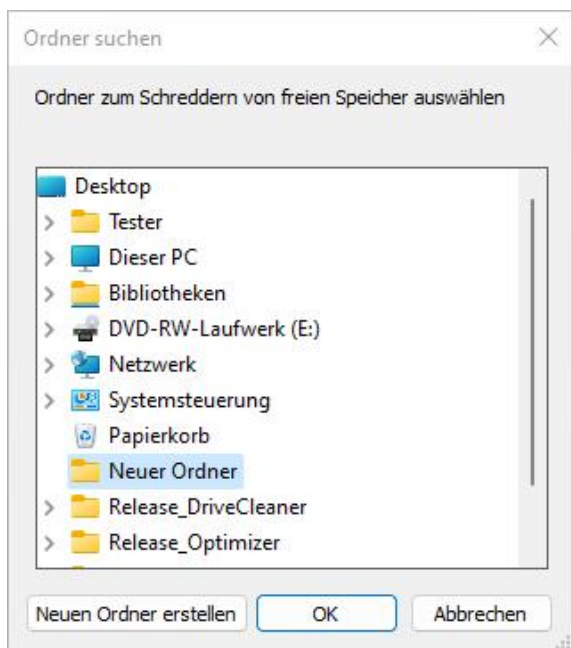
To shred the contents of entire folders, select “Shred folder” (2). In the following dialog you can now choose the folder to be shredded.



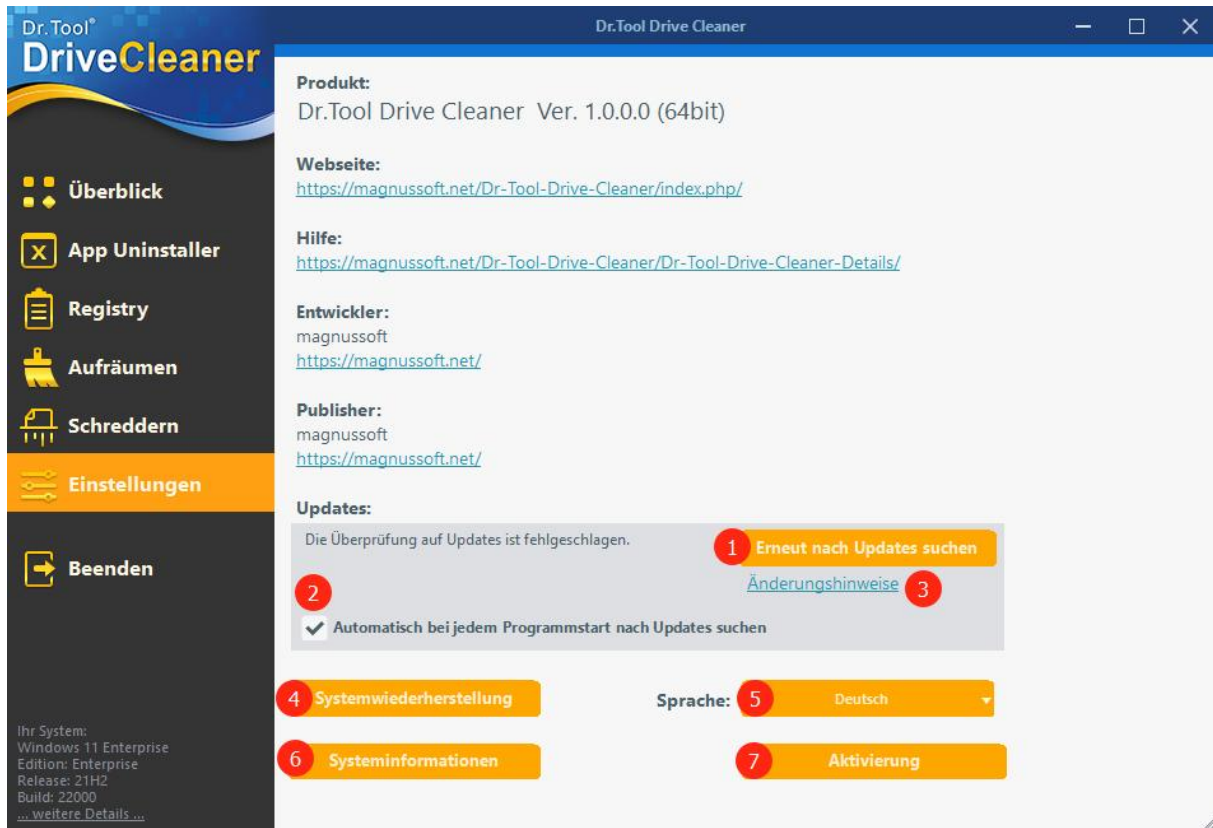
Shred free disk space

For shredding the free space on a drive, choose “Shred free space” (3).

In the following dialog, select any folder on the drive to be shredded for temporary files.



Settings area



In the Settings area, basic settings and information are provided.

System Restore

Before making changes to your system, you should create a system restore point! This can be done here at (4).

Language

In item (5) you can select the program language.

System Information

All information about your system (hardware and software) can be found at (6).

Activation

You can activate the program at (7).

Updates

You can have the program automatically check for a new version at startup by selecting (2). To check for a new version manually, press the button at (1). After an update, you will find information about all changes at (3).